

MONTHLY MEMBERSHIP PROGRESS REPORT

LOCATION NEBRASKA

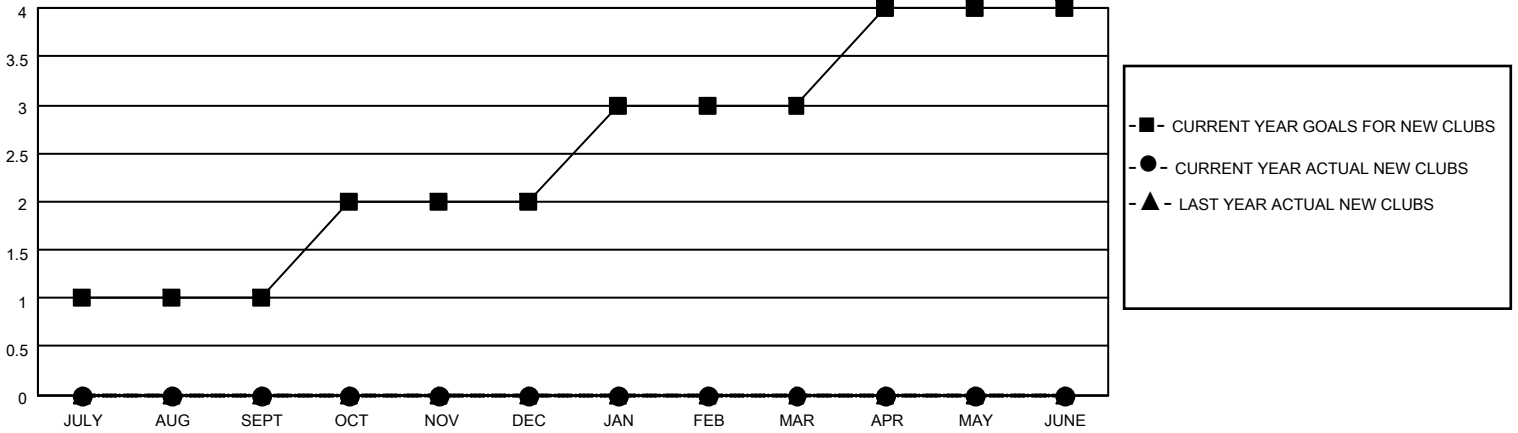
District 38 N

Results as of: 5/31/2021

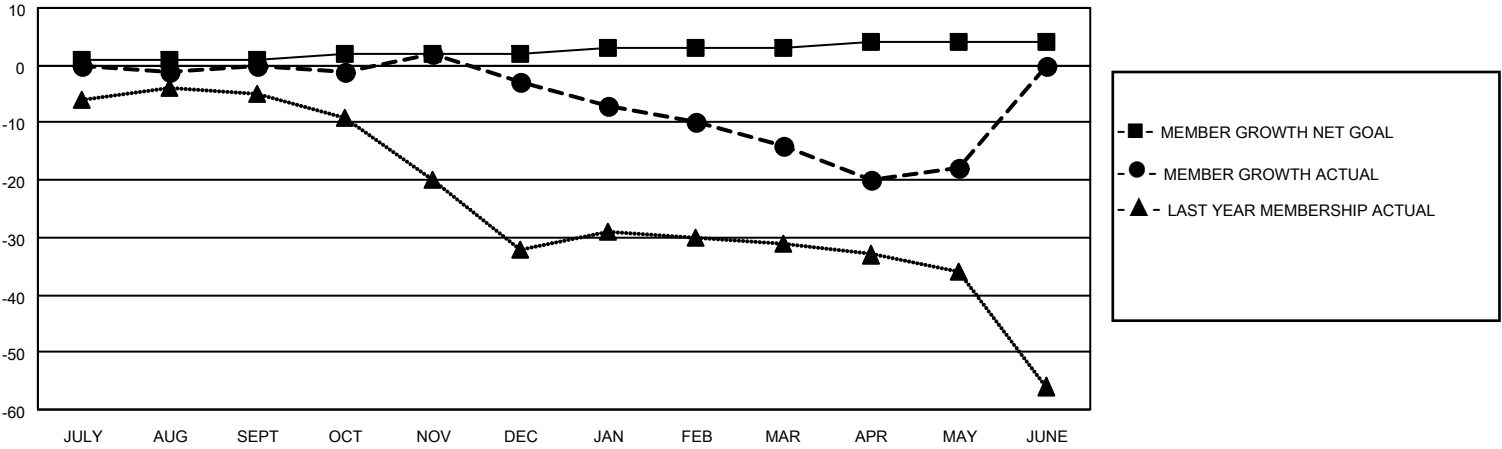
Clubs			
RESULTS FOR 2020-2021			
QUARTER	NEW CLUB GOAL	NEW CLUBS	DROPPED CLUBS
JULY/AUG/SEPT	1	0	0
OCT/NOV/DEC	1	0	0
JAN/FEB/MAR	1	0	1
APR/MAY/JUNE	1	0	0

Members			
RESULTS FOR 2020-2021			
QUARTER	MEMBER GROWTH NET GOAL	MEMBER GROWTH ACTUAL	DROPPED MEMBERS ACTUAL (including transfers)
JULY/AUG/SEPT	1	7	6
OCT/NOV/DEC	1	14	14
JAN/FEB/MAR	1	3	14
APR/MAY/JUNE	1	9	12

GOALS AND ACTUAL NEW CLUBS CUMULATIVE



GOALS AND ACTUAL MEMBERS CUMULATIVE



DROPPED CLUBS: 1

12 CLUBS OF 29 ADDED 1 OR MORE NEW MEMBERS

<u>GENDER DISTRIBUTION</u>	
MALE	494 (70.47%)
FEMALE	207 (29.53%)

<u>DROPPED MEMBERS</u>	
DECEASED	13
CLUB CANCELLED	3
OTHER	30
TOTAL	46

[CLICK HERE FOR CUMULATIVE MEMBERSHIP DATA](#)

TOTAL FAMILY UNIT MEMBERS	125
FAMILY MEMBERS PAYING HALF DUES	63